

# LV JUICE

## FLOOR OUTLET BOXES



RECESSED  
FOR FLEXIBLE  
FLOORING  
OPTIONS

### RECESSED LID

**FB145SS19R1STDO**  
Recessed Steel Lid Outlet Box  
2x Power

POWDER COATED ZINC ANNEALED  
STEEL BODY  
STAINLESS STEEL LID & FRAME  
RECESSED LID FOR FLEXIBLE FLOORING  
OPTIONS  
SINGLE CABLE EXIT FLAP  
25MM KNOCKOUTS PROVIDED FOR  
EASY CONDUIT ENTRY  
TWO AUTO SWITCHED POWER  
OUTLETS SUPPLIED

### BEVELLED EDGE

**FB145SSF1STD0USB**  
Flush Steel Lid Outlet Box  
2x Power 2x USB Charge  
**FB145SSF1STDO**  
Flush Steel Lid Outlet Box  
2x Power

POWDER COATED ZINC ANNEALED STEEL  
BODY  
STAINLESS STEEL LID & FRAME  
DOUBLE CABLE EXIT FLAP  
25MM KNOCKOUTS PROVIDED FOR EASY  
CONDUIT ENTRY  
TWO AUTO SWITCHED POWER OUTLETS  
SUPPLIED

AVAILABLE  
WITH 2 USB  
PORTS



**.cable.  
away**



**This Month**

CABLE CLEATS WITH  
MOUNTING HARDWARE  
PAGE 3

SEE THE SCIENCE BEHIND  
COPPER-BONDED EARTH  
RODS  
PAGE 4

FREE TEST TAGS WITH  
MI3309BT THIS MONTH  
PAGE 6

**FREE** MOLLY WOPPY  
WHILE STOCKS LAST CHEESY BITES

When you spend  
over \$500 (+GST)  
on one invoice  
this month



www.transnet.co.nz







## TE CONNECTIVITY COPPER BRAID

Copper braid is used for earthing applications and cable jointing where the cable needs to be fully reinstated. The tinned Copper braid is a flexible fine woven wire product with a tinned finish.

Sold by the metre, Earth Braid can be cut to length to reduce waste.

Cat No.	Width (mm)	Unit
EPPA-013-1-A	7	METRE
EPPA-013-3-A	25	
EPPA-013-5-A	35	
EPPA-013-6-A	50	

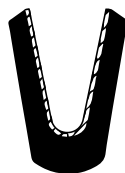
## TE'S RAYRIM PROTECTIVE SELF-ADHESIVE EDGING MATERIAL

TE Connectivity's Raychem Rayrim edging material is an extruded strip internally coated with a heat activated adhesive, so that on heating the profile changes from a "V" to a "U" section and the adhesive bonds to the substrate profile.

TE's Rayrim profile offers a clean and rapid means of covering edges. Its robustness allows TE's Rayrim to give protection under the most testing circumstances.

### FEATURES

- Manufactured from TE's Raychem radiation crosslinked polyolefin material
- Adhesive lining enables excellent adherence to many substrates
- Covers metal, wood and glass edges
- All round protection
- Flexible
- Applicable to both internal and external radii, as well as straight edges
- ROHS Compliant
- Wide Operating Temperature Range -55°C to 80°C



Supplied profile



Recovered profile



Cat No.	Plate Thickness SWG	mm	Length (mm)
RAYRIM-NR6-0-STK	30-24	0.31-0.56	1200
RAYRIM-NR7-0-STK	23-16	0.61-1.63	1200
RAYRIM-NR8-0-STK	15-10	1.83-3.25	1200
RAYRIM-NR9-0-STK	9-5	3.66-5.38	1200



AUTHORISED DISTRIBUTOR

## TRANSET MONTHLY GIVEAWAY SUPPORTING KIWI BUSINESSES

We've brought back a much-loved treat for our giveaway this month! Molly Woppy has been sharing the love and hand crafting artisan cookies in New Zealand since 2002. Crammed full of premium, locally and ethically sourced ingredients,

there is magic in every mouthful. They love bringing people joy through their baking and carefully pick the ziestiest fruit, tastiest cheese, chunkiest choc chips (and more). We've chosen their handmade

[www.mollywoppy.co.nz/](http://www.mollywoppy.co.nz/)

Crunchy N'Cheesy Savoury Bites for you to try and can guarantee that once you taste one you won't be able to put the bag down.





## BUILT TO HANDLE NZ'S EXTREME CONDITIONS

TE Connectivity's Cable Cleats offer a highly reliable retention system for cables and terminations in LV, MV and HV applications.



## AVAILABLE IN SINGLE, DUAL, & TREFOIL

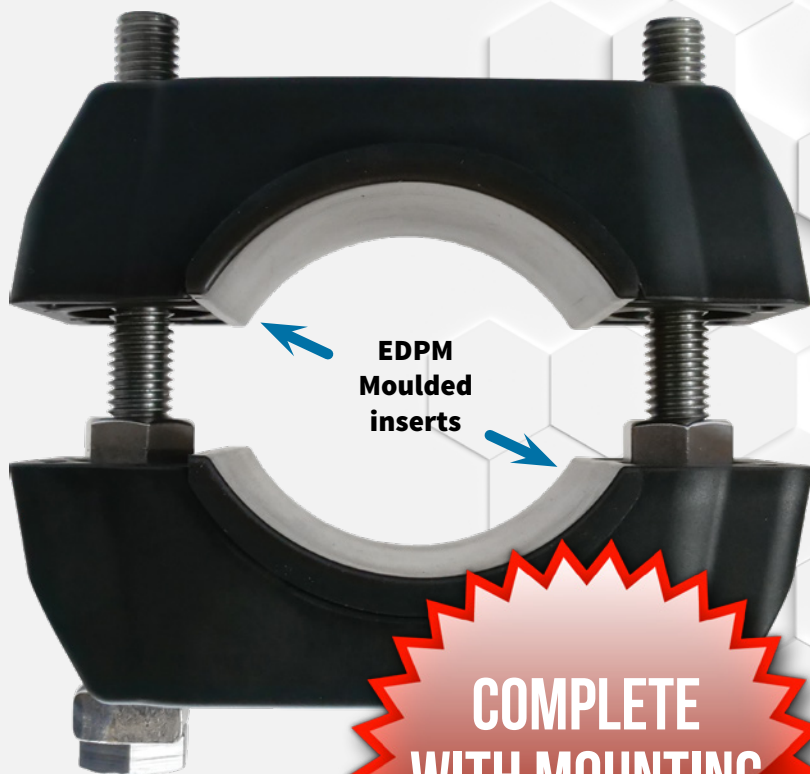
TE Connectivity's (TE) cable cleats are engineered to withstand harsh environments and perform under extreme temperatures from  $-40^{\circ}\text{C}$  to  $+120^{\circ}\text{C}$ . Their compact and stackable design is ideal for installation where space is limited, such as wind farms, data centers and substations.

Our single cable cleats are range-taking to fit cables with an outer diameter up to 135 mm and are suitable for both metric and imperial sized hardware.

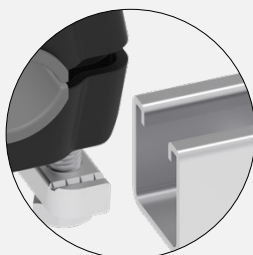
The interlocking EPDM molded inserts accommodate cable expansion, contraction, and vibration, as well as offer an increased level of asset protection and reduce mechanical load in vertical applications. To serve a wider application range, our cable cleats are also available as dual and trefoil versions.

### FEATURES & BENEFITS

- Made from impact-resistant, UV-stabilized, halogen-free, polymeric flame-retardant V0 material for use in harsh environments
- High resistance to electromechanical forces
- Strong mechanical performance due to innovative rib design and glass fiber reinforced material
- Easy and fast installation thanks to simplified design
- Flat surface design allows stacked configuration without an adapter
- Tested according to IEC 61914
- Interlocking EPDM molded inserts version for increased asset protection
- Available with stainless-steel hardware for higher corrosion resistance and mechanical performance



**COMPLETE  
WITH MOUNTING  
HARDWARE**



**STRUT NUT  
CONFIGURATION**

**TE**  
connectivity

AUTHORISED DISTRIBUTOR





The most extensive long term study on corrosion of buried copper and galvanized material was conducted between 1910–1955 by the National Bureau of Standards. The result of this study was to determine relative corrosion rates, which help set the benchmark for the use of copper-bonded ground rods to this day.

When the electrodes at selected sites were exhumed for corrosion analysis and observation, the results favored the use of copper-bonded ground rods.

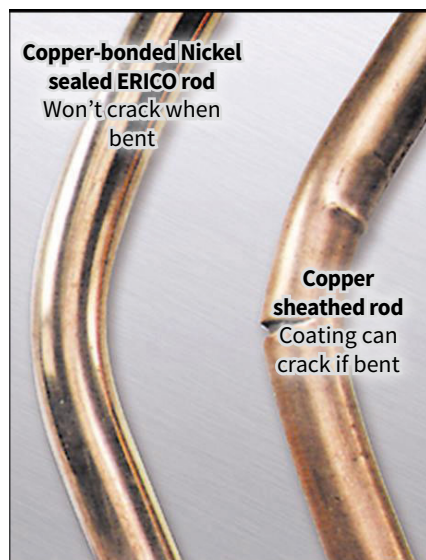
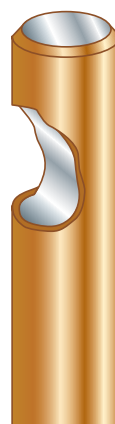
## WHY BONDED COPPER?

### ERICO Copper-Bonded Coating:

- Permanent molecular bond
- Low resistance performance
- High fault current capacity (IEEE® Std 80)
- Will not slip or tear when driven
- Will not crack if rod is bent
- 10 mil (254 micron) minimum coating on rods listed to UL®467
- Copper coating may vary to meet required standards

### Carbon Steel Core and Tip\*:

- Greater Tensile Strength
  - Deep driving capability
- \*ERICO copper-bonded rods



This is a galvanized steel ground rod driven into the ground vertically at the Pawnee testing site in Las Vegas, NV. This ground rod was buried from May of 1992 until March of 2003. The loss of zinc resulted in excessive corrosion of the steel. One area is reduced from a 3/4" diameter to approximately a 1/4" diameter due to the corrosion. The eventual failure would result in a potentially catastrophic loss of ground.



Top ground rod is galvanized steel, 3/4" x 10'. Bottom ground rod is copper-bonded, 5/8" x 8'. Both ground rods were driven into the soil vertically at the Pecos testing site in Las Vegas, NV in December of 1992. Both ground rods were exhumed from the site in April of 2004.

The loss of zinc on the galvanized steel rod resulted in excessive corrosion of the steel. The copper-bonded steel ground rods showed minimal corrosion.

## WHAT'S THE POINT?

A grounding system's performance is dependent upon the effective operation of several components. Failure of any one of these renders the entire system ineffective. Electrical elements buried underground are subject to much harsher conditions than their counterparts above ground. **The ability of an electrical grounding component to resist corrosion determines its service life.**

### GROUNDING SYSTEMS:

- Protect people
- Provide a signal reference for low voltage digital signals for electronic equipment
- Prevent the flashover of insulators on transmission lines
- Protect expensive equipment, e.g. transformers, capacitors, reclosers, and lightning arrestors

## WHY ERICO?

### ERICO Earth Rods have all the benefits of a copper-bonded coating, plus:

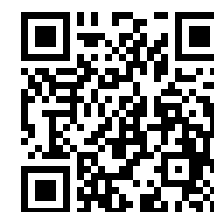
- Nickel-sealed high strength steel core
- 99.9% pure electrolytic copper coating
- ERICO® name, length, diameter and part number is roll-stamped within 12" (304.8 mm) of chamfered end
- UL logo and control number where applicable stamped on each rod for easy inspection after installation

ERICO's unique manufacturing process includes drawing the steel rod to size before the copper bonding process begins, resulting in a straighter, harder steel core. We use a continuous electro-plating process over the nickel sealed steel core resulting in a permanent molecular bond which will not slip or tear when driven, nor crack when bent, that provides decades of reliable performance.

All ERICO® rods are made to meticulous standards and exceed the requirements outlined in AS/NZS 3000:2007 for minimum surface treatment thickness.

ERITECH Earth Rod Testing & Compliance	Australia AS:3000	Britain BS:5514	USA UL467	Europe EN 50164-2
DIMENSIONS	COMPLY	COMPLY	COMPLY	COMPLY
COPPER THICKNESS	COMPLY	COMPLY	COMPLY	COMPLY
STRENGTH TEST	N/A	N/A	COMPLY	COMPLY
COPPER ADHESION TEST	N/A	N/A	COMPLY	COMPLY
BEND TEST	N/A	N/A	COMPLY	COMPLY

The copper adhesion tests confirm the design feature that prevents the ingress of moisture and subsequently the integrity of the earth rod. ERICO use Carbon steel, grade 1018 which has a much higher tensile strength than the 250 / 350 grade mild steel typical of the core in a tubular copper sheathed earth rod.

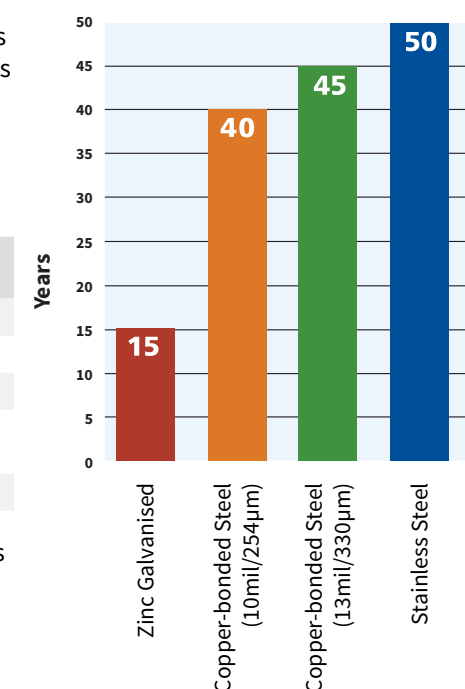


## VIEW THE FULL RANGE

## PLATING PROCESS = LONGER LIFE



### Ground Rod Life Expectancy



## ERICO®



**GREAT DEAL ON MI3309BT**



# MI3309BT

## PORTABLE APPLIANCE TESTER



### THE FOLLOWING TESTS CAN BE PERFORMED:

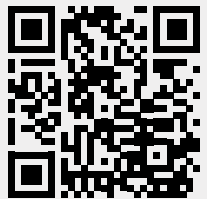
- Functional and visual inspection
- Earth bond resistance
- Insulation resistance; insulation resistance of isolated accessible conductive parts
- Differential leakage current test
- Touch leakage test
- Substitute leakage current; Substitute leakage current of isolated accessible conductive parts
- PRCD test
- Power test
- IEC cord polarity test
- TRMS voltage meter

### • KEY FEATURES

- Graphic high resolution LCD with with backlight
- Large green & red lights for additional PASS / FAIL indication at sides of LCD
- Large data flash memory for storing test results & parameters
- Two PC communication ports (USB & RS232C)
- Built-in real time clock
- Bar-coding system for quick test code selection and ID of device under test
- Programmable limits for PASS/FAIL evaluation
- Fully compatible with new Metrel PATLink PRO PC software package
- Portable and lightweight design
- Rechargeable with built-in charging circuit
- Operates on mains power or batteries



**ALSO AVAILABLE AS A KIT -  
VIEW THE FULL SPECS HERE:**



**WITH MI3309BT THIS MONTH**

**\$1899.00 + GST**





## HOOK & LOOP TAPE

This continuous reel of back to back grip hook and loop reduces waste, allowing you to cut to the required length onsite. Offers a secure but gentle cable support. Reusable over and over, simply open and refasten as required.



**REUSABLE**

Cat No.	Width (mm)	Roll Length (m)
TNHL1225	12	25
TNHL2025	20	25

Product # TNHL1225

**\$20.50** + GST

Product # TNHL2025

**\$31.25** + GST

## DOUBLE SIDED TAPE

Used for holding, joining or bonding a wide variety of surfaces, this double sided tape is available in three sizes and boasts an aggressive adhesive for strength and durability. Fast and easy to install, this cost effective fastener is versatile and reliable.

Adhesion = 0.25kg/cm<sup>2</sup>

Colour = White



Cat No.	Width (mm)	Roll Length (m)
TNDST12	12	10
TNDST18	18	10
TNDST24	24	10

Product # TNDST12

**\$9.00** + GST

Product # TNDST18

**\$11.50** + GST

Product # TNDST24

**\$14.00** + GST

**STRONG & DURABLE**

## PVC DUCT TAPE

Plasticised PVC Film coated with a high tack pressure sensitive natural rubber adhesive. Used for joining, patching and repairing polythene/plastic films and ducts. Excellent conformability and durability, good UV and water resistance, suitable for exterior use.



### TECHNICAL DATA

- Backing PVC Film
- Adhesive Natural Rubber – Excellent bonding power
- 0.13mm Tape thickness
- Silver colour
- 6N/25mm Adhesion
- 150% Elongation
- 80°C Temperature resistance

Cat No.	Width (mm)	Roll Length (m)
DT48	48	30

Product # DT48

**\$5.75** + GST



# PREPARE YOURSELF

## Our Top Vehicle Safety Gear



### Auckland

78 Cryers Road  
East Tamaki  
Auckland  
NEW ZEALAND  
Ph 0800 442 182  
PO Box 39 383  
Howick, Auckland

### Wellington

10 Petone Ave  
Petone  
Wellington  
NEW ZEALAND  
Ph 04 576 2530  
PO Box 39 383  
Howick, Auckland  
NEW ZEALAND  
sales@transnet.co.nz

### TransNet Tonga

#### Nuku'alofa

Lakalakaimonu Multi Utility  
Complex  
Taufa'ahau Road  
Poutaha  
Nuku'alofa  
TONGA  
Ph +67 627 939  
PO Box 2932  
Nuku'alofa  
TONGA  
transnet@kalianet.to

## ABE POWDER TYPE PORTABLE FIRE EXTINGUISHERS

### FEATURES

- High quality thick powder coating with increased UV resistance
- Supplied with vehicle bracket
- AS/NZS 1841.5 Approved
- Special hose hook to secure the hose to the side of the extinguisher body



Cat No.	Size
G1HABE	1.0KG
G1.5ABESVB	1.5KG
G2.0ABEVB	2.0KG
G2.5ABEVB	2.5KG

VEHICLE  
SAFETY  
GEAR FOR  
UNEXPECTED  
SITUATIONS

## VEHICLE FIRST AID KIT

This kit contains all the basic items needed for a vehicle first aid kit and comes in a handy soft carry bag.



VIEW THE FULL  
CONTENTS ON  
OUR WEBSITE

CAT NO. FAK010N1S



TransNet NZ Ltd has made every reasonable effort to ensure the accuracy of this information and it is to the best of our knowledge correct and reliable. Under no circumstances does this constitute an assurance of any particular quality or performance and users should independently evaluate the suitability of products for their desired application. All information in this publication including pricing, drawings, illustrations, images and graphic designs are reflections of our current understanding. TransNet NZ Ltd reserves the right to make any adjustment to this information at any time. Our liability for the products outlined in this publication is set forth in our standard terms and conditions of trade. In case of any potential ambiguities or questions, please contact us for clarification.

